

Large Business Forum - (LBF) - **PURPOSE**

The LBF are the representative body for large businesses working in the downstream gas industry. They provide legislative and technical advice in addition to supporting industry regulators, including the Health and Safety Executive, Gas Safe Register, The Standards Setting Body, IGEM, OFGEM and Government Departments

The LBF promote an environment which is gas safe for all with improved training, guidance and clarity to drive Quality, Knowledge and Performance working within the regulatory framework applying a 'common sense approach'

The LBF work together sharing and resolving problems through collaboration and trust with independence

“There is no other forum that allows the larger gas businesses to interact, cooperate, share and resolve compliance issues in a non-competitive environment”

Legislation

- HASAWA – Is the primary piece of legislation covering occupational health and safety in Great Britain for all businesses, employees & contractors
- GSIUR – Uses principles of HASAWA and relates it to gas installers & users
- HSE L56 – Safety in the installation and use of gas systems and appliances
 - An HSE publication aligning the approved codes of practice (ACoP) and guidance to GSIUR to give greater understanding of the GSIUR relating to installers and gas users
- GSMR – Uses principles of HASAWA and relates to network owners & ESP's
- HSE L80 – A Guide to the Gas Safety (Management) Regulations
 - An HSE publication aligning the approved codes of practice (ACoP) and guidance to GSMR to give greater understanding of the GSMR relating to the safe management of gas flow through a network, particularly those parts supplying domestic consumers, and a duty to minimise the risk of a gas supply emergency + arrangements for dealing with supply emergencies + arrangements for dealing with reported gas escapes and gas incidents + gas composition.
- Gas Act – Includes duties to notify connection/disconnection of service pipes, disconnection of meters in certain circumstances; maintenance of service pipes; duties on public gas transporters in relation to certain gas escapes & entry powers in specified circumstances

Standards & Guidance

Sitting beneath Regulation are standards and guidance documents which offer greater detail and instruction on how to comply with the Regulations

British Standards (e.g. flueing and ventilation and individual appliance installation standards)

- BSI = Manager – Built Environment = ????

IGEM Standards (e.g. most upstream standards, tightness testing, shared flues and Gas in Flats)

- IGEM = Technical Manager = Ian McCluskey - 01509678189 ian.mccluskey@igem.org.uk
- IGEM/G/11 - Gas Industry Unsafe Situations Procedure (GIUSP) = Chair = Dave Bendle – Contact secretariat IGEM - ????
- Institution of Gas Engineers & Managers (IGEM) – IGEM/IG/1 = Standards of training in gas work

Liquid Gas UK (standards relating to LPG)

- Liquid Gas UK = Technical & Safety Manager = Richard Hakeem - 01926 513797
richard.hakeem@uklpg.org

Where standards have 'gaps' or require clarification Technical bulletins can be issued

- Technical bulletins are created and owned by interested members of the industry in conjunction with Gas Safe Register (GSR) who publish the TB's

GSR advise industry of changes to Standards through issuing Industry Standards Updates (ISU's)

Training & Assessment

The Standards Setting Body (SSB) is the lead for all training and assessment in the downstream gas industry.

Energy and Utility Skills Ltd (EU Skills) facilitates and manages the SSB as agreed by the Health and Safety Executive (HSE). The SMB are scheme owners of the Nationally Accredited Certification Scheme for Individual Gas Fitting Operatives (ACS) and EU Skills are scheme owners of Group Competence Scheme (GCS).

The SSB is responsible for the governance and industry consultative structure and associated processes that determine and agree the Matters of Gas Safety (MoGS) competence criteria for gas fitting operatives that undertake gas work that falls within the scope of the Gas Safety (Installation & use) Regulations (GSIUR) & IGEM/IG/1 – Standards of training in gas work.

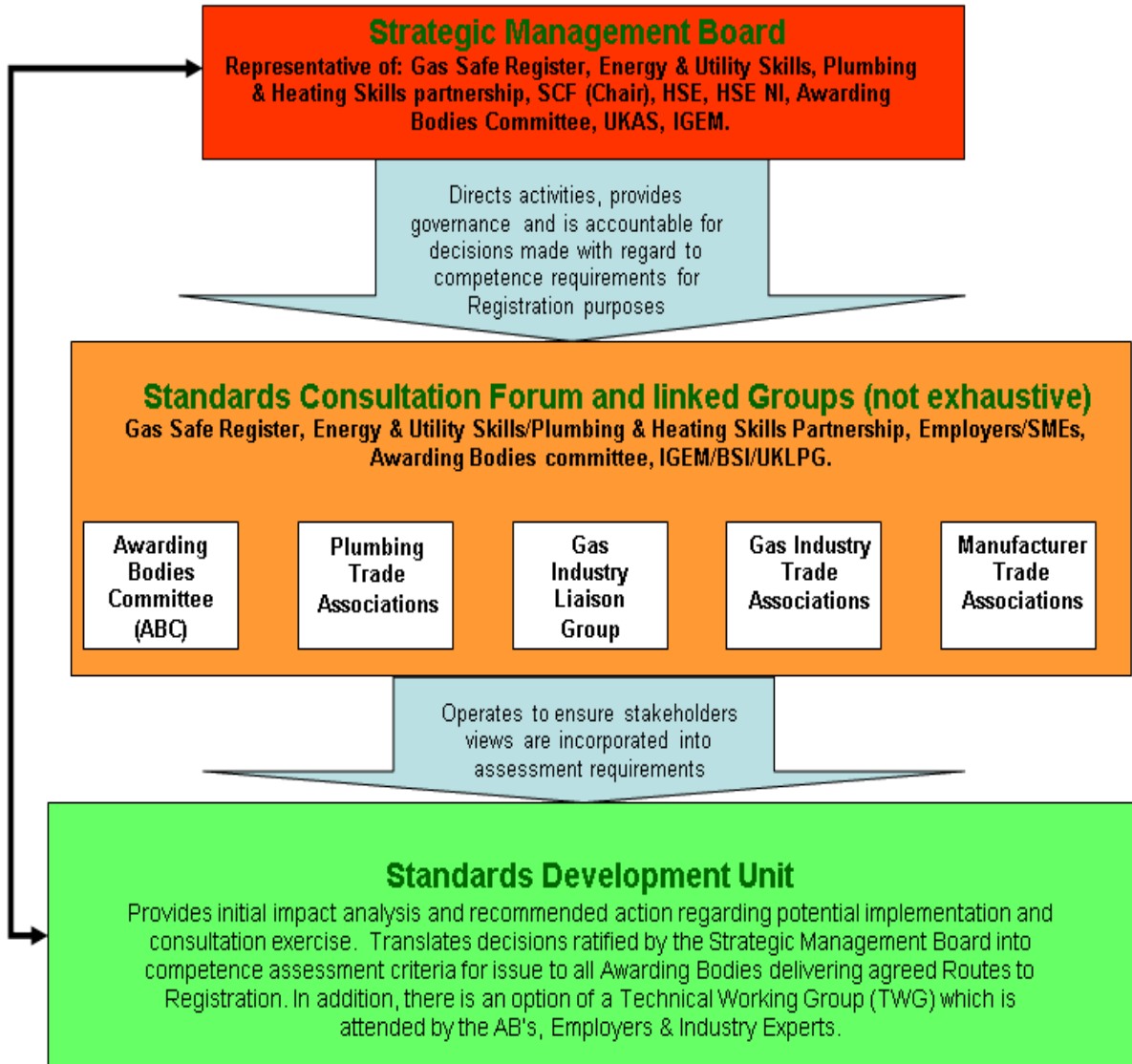
The SSB comprises of a Strategic Management Board (SMB), a Standards Consultation Forum (SCF) and a Standards Development Unit (SDU). Also EU Skills facilitate the GILG (Gas Industry Liaison Group) which is open for all to attend and takes input and feedback from all areas of the gas industry including registered gas installers.

The SSB welcomes all initiatives which gain views on training and assessment to help improve our gas industry and gas safety.

Note: The SCF makes agreed decisions on standards setting and the SMB ratifies those decisions and provides governance that due process has been followed (The SMB owns the ACS).

Training / Assessment

Standard Setting Body Structure



The SMB owns ACS & GCS and provides governance ensuring due process has been followed with SCF decisions.

The SCF debates and makes decisions by majority on setting standards for Training & Assessment for all downstream gas activities. (IGEM/G/1) - ACS

EU Skills: www.euskills.co.uk

Richard Harper: 07872128888 Richard.harper@euskills.co.uk

Malcolm Greetham: 07889413469
Malcolm.Greetham@euskills.co.uk

Chair of SMB: David Cowburn: David.Cowburn@napit.org.uk

Chair of SCF: Trevor Smallpeice – 07850251712
trevorsmallpeice@outlook.com

Chair of GILG: John Forrest – 0795858969 John Forrest
john.forrest@gasassess.co.uk

Industry Bodies & Metering

- GISG – Gas Industry Safety Group
- APPCOG – All Party Parliamentary Carbon Monoxide Group
- HHIC – Heating & Hotwater Industry Council – Part of EUA (Energy and Utilities Alliance)
- APHC – Association of Plumbing & Heating Contractors
- SNIPF- Scottish & Northern Ireland Plumbing Federation
- ENA – Energy Networks Association
- Metering:
 - MEM's – Meter Equipment Managers – Owners of the meter
 - AMI – Approved Meter Installer (formally OAMI (ofgem AMI) - This is a Meter Installer approved in accordance with the Supply Point Administration Agreement (SPAA) - Gas Supplier licence conditions
 - Smart – Smart Metering